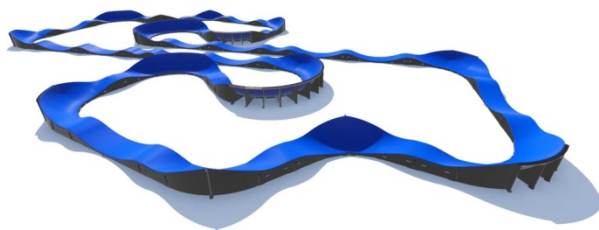
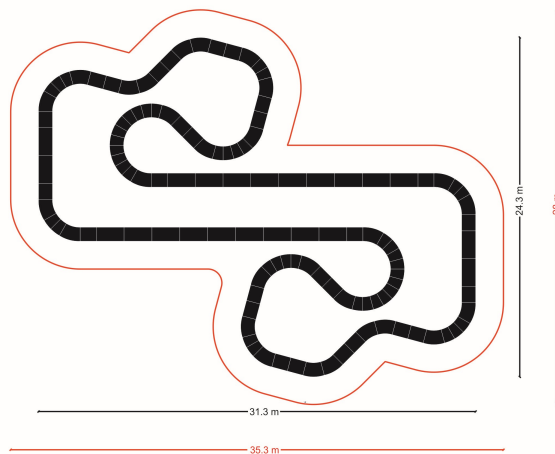


Pumptrack PC8



Pumptrack PC8

Safety area



Rideable Surface length: 142 m
Safety area: 28m x 35,3m



TECHRAMPS.com
Professional Skate Parks



SLO | concept™
SKATEPARKS DESIGN

WAKEPRO
WAKEPARKS EQUIPMENTS POWERED BY TECHRAMPS

FLOWPARKS
.com

PUMPTRACK.EU
SŁO SP. Z O.O. SP. K.
KRZYSZTOFORYZCE 203
32-010 KOCMYRZÓW
NIP: 682-17-61-482

TEL: +48 (12) 311-03-13
FAX: +48 (12) 312-06-96
MOBILE: +48 503-103-001
INFO@PUMPTRACK.EU

INFORMACJE OGÓLNE: INFO@PUMPTRACK.EU
MOBILE: +48 503-103-001
WWW.PUMPTRACK.EU

Bicycle playground – pumptrack

Pumptrack it is track entirely made of modular elements. This type of object can be a form of self-contained activity or co-creates a sports complex. Pumptrack consists of moguls, turning and small profiled "jumps" arranged in this order to allow the spin up and maintain speed without pedalling. The concern to maintain the high level of security, facility allows to familiarity with the bike, develops coordination and improves the sense of balance.

1. Technical description of the project to build a bike playground - PUMPTRACK PC8.

Composite Pumptruck PC8 is a combination of 28 pumps to dispel and 14 band of different radius of turning. Thanks to its diversity each, especially novice user will be able to become familiar with driving on this type of objects. It gives the basis for participation in the competition for even the most complex of this type of track. This track and other of our collection are indicated for both beginners and advanced users many sports such as bicycles, skateboards, roller skates, scooters and all other categories of sport. Due to the specificity of these sport discipline the users can move through this type of track.

1.1. Determination of the material scope of works

Scope of work

- Alignment and levelling of land designated for Pumptrack (declines cannot exceed 3%).

Levelling of land is not necessary if on the place where installation is planned **there is asphalt surface, concrete or levelled layer of aggregate.**

- Supply and installation of bicycle playground - PUMPTRACK.

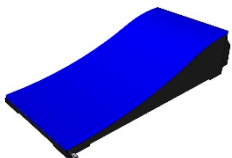
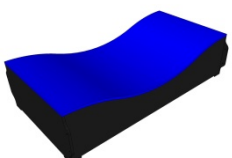
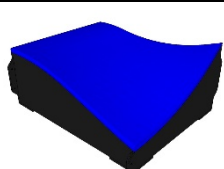
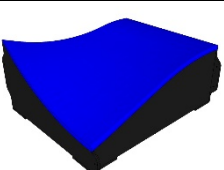
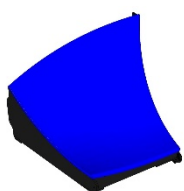
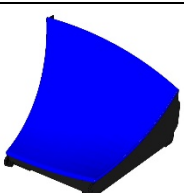

Producer: Techramps 31-990 Krakow , Organki 2, – www.pumptrack.eu

1.2. Specification of bike playground - PUMPTRACK

Requirements for components:

- Minimum height of turning modules is 95 cm,
- Minimum height of hump modules is 49 cm,
- Minimum width of the running layer of is 1 m,
- The components are based on the design of plywood, double laminated with a thickness of 18 mm and impregnated with larch wood,
- Each module of turning is comprised 15 ° of Right Angle
- The modules should be connected together using bolts 10/60 mm,
- elements of cycling are made of composite (fiberglass, synthetic resin) with anti-skidding layer TechGrip. In the upper surface of the layer of cycling cannot be located elements directly linked to the elements of structure.
- Screw connections of mogul elements must be strengthened with hot-dip galvanized angle. Minimum thickness of angle is 3mm,
- Inner composition of screw of the modules of turning must be strengthened with steel flat bar. Minimum thickness of steel flat bar is 3 mm,
- The modules must be isolated from the ground using stands with plywood.
- All elements of the track must have got handles which help lifting them and manipulation easy,
- All the components of the track must be paired together with a tolerance of 3 mm.
- The contractor provide minimum 2-year of guarantee on the structure of equipment and 5-year of guarantee on the chassis element. Guarantee does not cover mechanical damage,
- All used screws - Torx, hot-dip galvanized,
- All the used steel elements must be hot-dip galvanized,
- Bicycle playground must have possibility to expand with new elements,
- Track bike must be in line with PN-EN 14974 + A1: 2010,
- It is allowed to change the configuration of the track arrangement

1.3. List of elements

NAME OF MODULE	VIEW	DIMENSIONS [cm]	QUANTITY
P1		200x100x49	20
P2		200X100X49	2
Z1L		125x100x58	14
Z1P		125x100x58	14
Z2P		147x120x97	14
Z2L		147x120x97	14
B		83x120x97	44

EXAMPLE OF MODULAR PUMPTRACK



TECHRAMPS.com
Professional Skate Parks



SW | concept
SKATEPARKS DESIGN

WAKEPRO
WAKEPARKS EQUIPMENTS POWERED BY TECHRAMPS

FLOWPARKS
.com

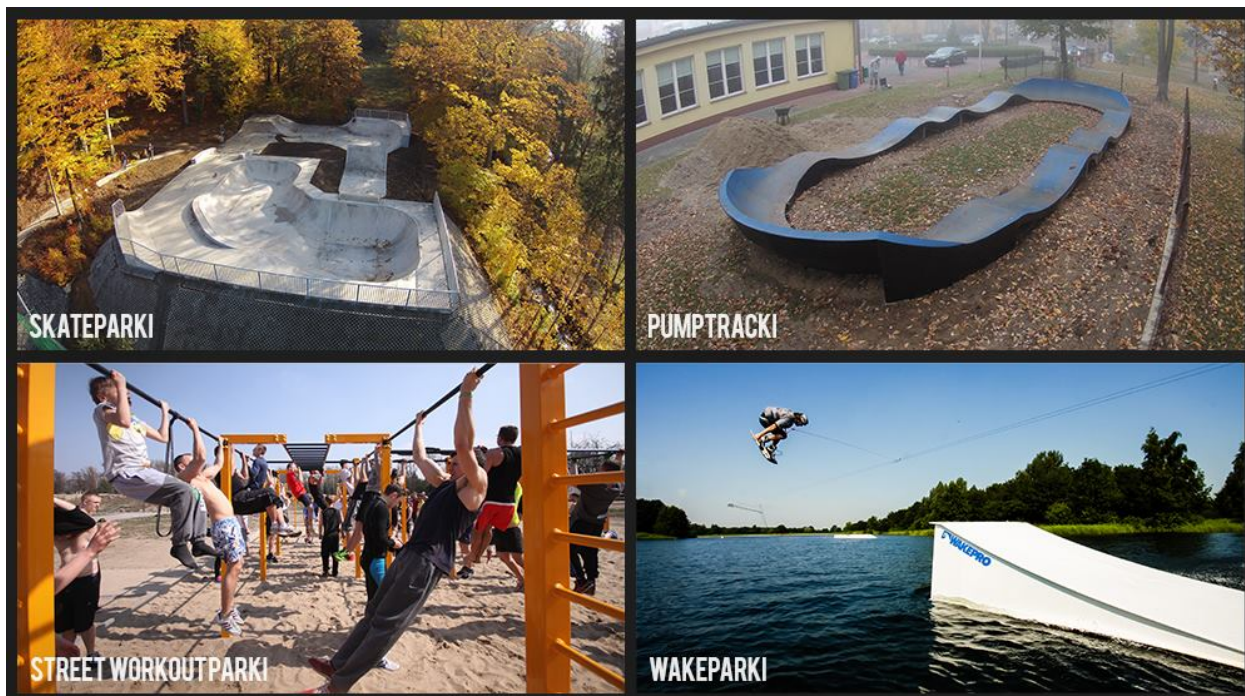
PUMPTRACK.EU
SŁO SP. Z O.O. SP. K.
KRZYSZTOFORYZCE 203
32-010 KOCMYRZÓW
NIP: 682-17-61-482

TEL: +48 (12) 311-03-13
FAX: +48 (12) 312-06-96
MOBILE: +48 503-103-001
INFO@PUMPTRACK.EU

INFORMACJE OGÓLNE: INFO@PUMPTRACK.EU
MOBILE: +48 503-103-001
WWW.PUMPTRACK.EU

OTHER FACILITIES

Do you have a question about another subject, please contact us by e-mail or phone.



TECHRAMPS.com
Professional Skate Parks

TECHRAMPS
CONCRETE

SLO | concept
SKATEPARKS DESIGN

WAKEPRO
WAKEPARKS EQUIPMENTS POWERED BY TECHRAMPS

FLOWPARKS
.com

PUMPTRACK.EU
SŁO SP. Z O.O. SP. K.
KRZYSZTOFORYZCE 203
32-010 KOCMYRZÓW
NIP: 682-17-61-482

TEL: +48 (12) 311-03-13
FAX: +48 (12) 312-06-96
MOBILE: +48 503-103-001
INFO@PUMPTRACK.EU

INFORMACJE OGÓLNE: INFO@PUMPTRACK.EU
MOBILE: +48 503-103-001
WWW.PUMPTRACK.EU