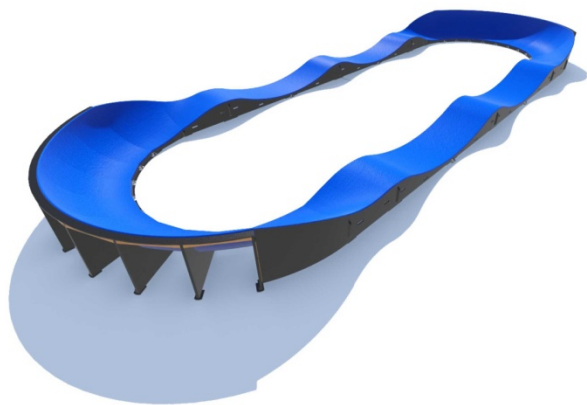
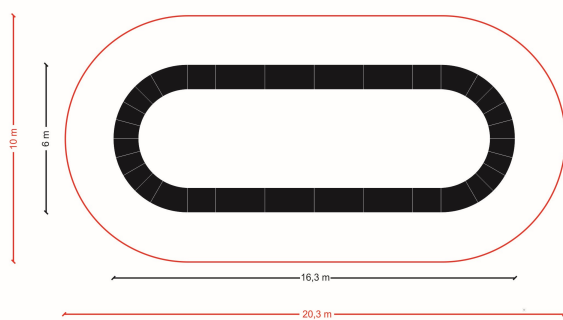


## Pumptrack PC1



## Pumptrack PC1

Safety area



Rideable Surface length: 37 m  
Surface area: 10m x 20,3m

**TECHRAMPS.com**  
Professional Skate Parks

**TECHRAMPS**  
CONCRETE

**SW CONCEPT**  
SKATEPARKS DESIGN

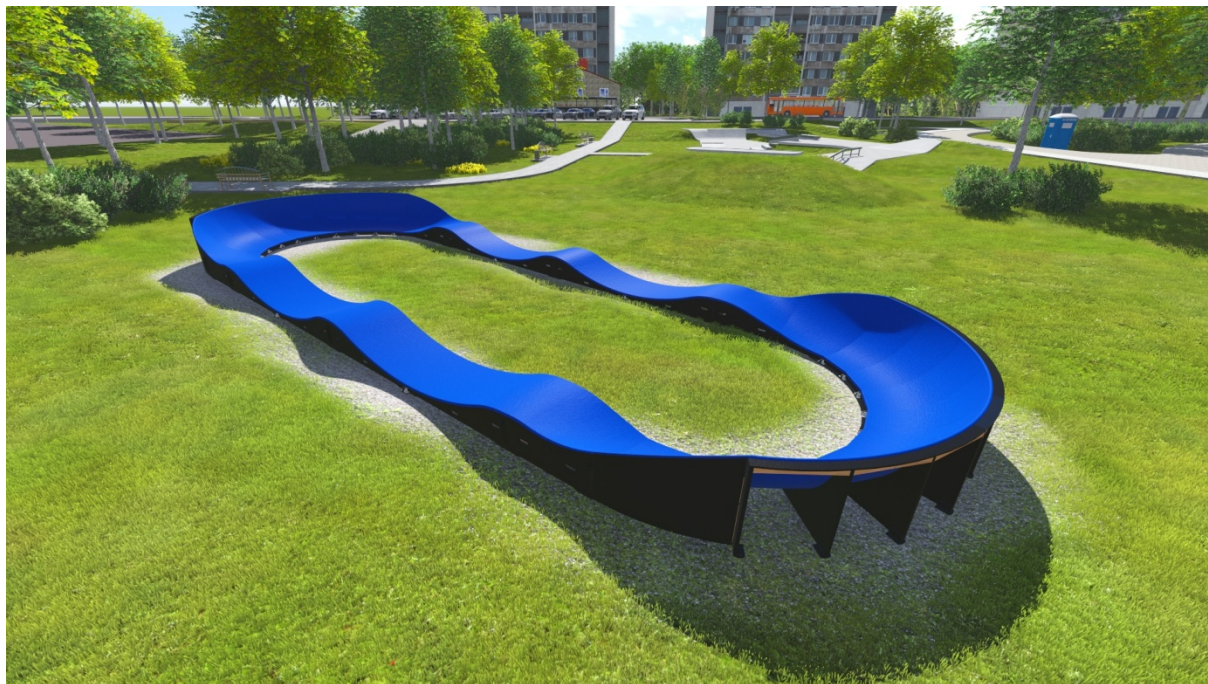
**WAKEPRO**  
WAKEPARKS EQUIPMENTS POWERED BY TECHRAMPS

**FLQWPARKS**  
.com

PUMPTRACK.EU  
SŁO SP. Z O.O. SP. K.  
KRZYSZTOFORYZCE 203  
32-010 KOCMYRZÓW  
NIP: 682-17-61-482

TEL: +48 (12) 311-03-13  
FAX: +48 (12) 312-06-96  
MOBILE: +48 503-103-001  
INFO@PUMPTRACK.EU

INFORMACJE OGÓLNE: INFO@PUMPTRACK.EU  
MOBILE: +48 503-103-001  
WWW.PUMPTRACK.EU



**TECHRAMPS.com**  
Professional Skate Parks



**SLO | concept™**  
SKATEPARKS DESIGN

**WAKEPRO**  
WAKEPARKS EQUIPMENTS POWERED BY TECHRAMPS

**FLOWPARKS**  
.com

PUMPTRACK.EU  
SŁO SP. Z O.O. SP. K.  
KRZYSZTOFORYZCE 203  
32-010 KOCMYRZÓW  
NIP: 682-17-61-482

TEL: +48 (12) 311-03-13  
FAX: +48 (12) 312-06-96  
MOBILE: +48 503-103-001  
INFO@PUMPTRACK.EU

INFORMACJE OGÓLNE: INFO@PUMPTRACK.EU  
MOBILE: +48 503-103-001  
WWW.PUMPTRACK.EU

## Bicycle playground – pumptrack

Pumptrack it is track entirely made of modular elements. This type of object can be a form of self-contained activity or co-creates a sports complex. Pumptrack consists of moguls, turning and small profiled "jumps" arranged in this order to allow the spin up and maintain speed without pedalling. The concern to maintain the high level of security, facility allows to familiarity with the bike, develops coordination and improves the sense of balance.

### 1. Technical description of the project to build a bike playground - PUMPTRACK PC1.

The smallest Composite Pumptrack consists of two bands of 180 degrees and 6 pumps to dispel. Thanks to its no big structure is ideal for a small square. The offer of the smallest pumptrack will satisfy beginners and people familiar with this sport discipline. Pumptrack is installed on a flat asphalt, concrete or previously prepared, paved square. With pumptrack can benefit cyclists, rollerblades, windsurfer and commuters on scooters.

#### 1.1. Determination of the material scope of works

Scope of work

- Alignment and levelling of land designated for Pumptrack (declines cannot exceed 3%).

Levelling of land is not necessary if on the place where installation is planned **there is asphalt surface, concrete or levelled layer of aggregate.**

- Supply and installation of bicycle playground - PUMPTRACK.


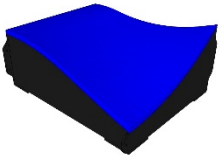
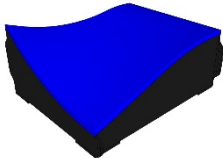
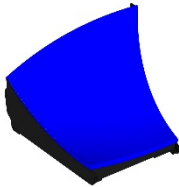
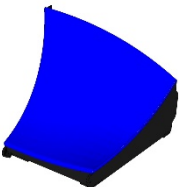

Producer: Techramps 31-990 Krakow , Organki 2, – [www.pumptrack.eu](http://www.pumptrack.eu)

## **1.2. Specification of bike playground - PUMPTRACK**

### **Requirements for components:**

- Minimum height of turning modules is 95 cm,
- Minimum height of hump modules is 49 cm,
- Minimum width of the running layer of is 1 m,
- The components are based on the design of plywood, double laminated with a thickness of 18 mm and impregnated with larch wood,
- Each module of turning is comprised 15 ° of Right Angle
- The modules should be connected together using bolts 10/60 mm,
- elements of cycling are made of composite (fiberglass, synthetic resin) with anti-skidding layer TechGrip.
- In the upper surface of the layer of cycling cannot be located elements directly linked to the elements of structure.
- Inner composition of screw of the modules of turning must be strengthened with steel flat bar. Minimum thickness of steel flat bar is 4 mm,
- The modules must be isolated from the ground using stands with plywood.
- All elements of the track must have got handles which help lifting them and manipulation easy,
- All the components of the track must be paired together with a tolerance of 3 mm.
- The contractor provides minimum 2-year of guarantee on the structure of equipment and 5-year of guarantee on the chassis element. Guarantee does not cover mechanical damage,
- All used screws - Torx, hot-dip galvanized,
- All the used steel elements must be hot-dip galvanized,
- Bicycle playground must have possibility to expand with new elements,
- Track bike must be in line with PN-EN 14974 + A1: 2010,
- It is allowed to change the configuration of the track arrangement

## 1.3. List of elements

NAME OF MODULE	VIEW	DIMENSIONS [cm]	QUANTITY
P1		200x100x49	8
Z1L		125x100x58	2
Z1P		125x100x58	2
Z2P		147x120x97	2
Z2L		147x120x97	2
B		83x120x97	16



## EXAMPLE OF MODULAR PUMPTRACK



**TECHRAMPS.com**  
Professional Skate Parks



**SW | concept™**  
SKATEPARKS DESIGN

**WAKEPRO**  
WAKEPARKS EQUIPMENTS POWERED BY TECHRAMPS

**FLOWPARKS.com**

PUMPTRACK.EU  
SŁO SP. Z O.O. SP. K.  
KRZYSZTOFORYZCE 203  
32-010 KOCMYRZÓW  
NIP: 682-17-61-482

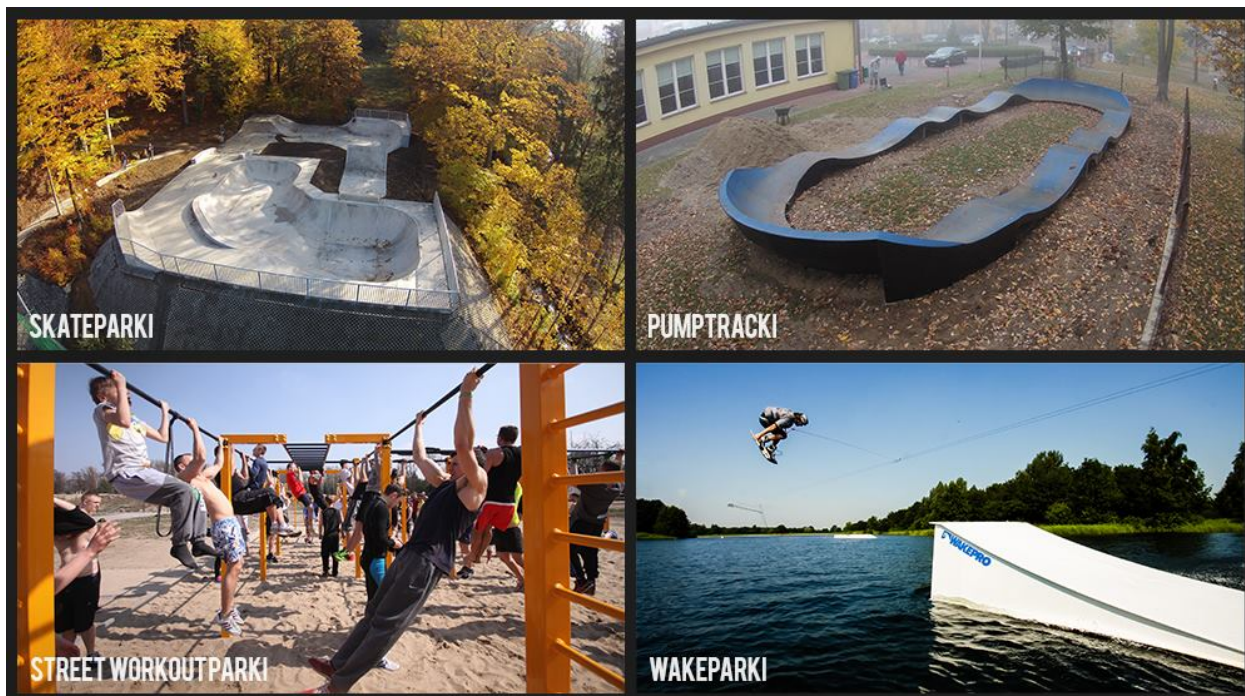
TEL: +48 (12) 311-03-13  
FAX: +48 (12) 312-06-96  
MOBILE: +48 503-103-001  
INFO@PUMPTRACK.EU

INFORMACJE OGÓLNE: INFO@PUMPTRACK.EU  
MOBILE: +48 503-103-001  
WWW.PUMPTRACK.EU



## OTHER FACILITIES

Do you have a question about another subject, please contact us by e-mail or phone



**TECHRAMPS.com**  
Professional Skate Parks



**SLO | concept™**  
SKATEPARKS DESIGN

**WAKEPRO**  
WAKEPARKS EQUIPMENTS POWERED BY TECHRAMPS

**FLOWPARKS**  
.com

PUMPTRACK.EU  
SŁO SP. Z O.O. SP. K.  
KRZYSZTOFORYZCE 203  
32-010 KOCMYRZÓW  
NIP: 682-17-61-482

TEL: +48 (12) 311-03-13  
FAX: +48 (12) 312-06-96  
MOBILE: +48 503-103-001  
INFO@PUMPTRACK.EU

INFORMACJE OGÓLNE: INFO@PUMPTRACK.EU  
MOBILE: +48 503-103-001  
WWW.PUMPTRACK.EU