



**TECHRAMPS.com**  
Professional Skate Parks

# LIGHT CONCRETE SERIES



# 01. TECHNOLOGY

Modern construction solutions combined with the shotcreting method (the wet application of concrete under pressure) allowed for the creation of the new Light Concrete series. This technology allows for the construction of concrete skate parks with lower financial expenditures than in the case of monolithic skate parks or skate parks made from precast elements. The quick implementation of the project is another advantage. Equipment from the Light Concrete series is adapted for installation on existing surfaces and during the replacement of old wooden elements with new concrete elements. The process of building such a skate park is consulted with the local youth, which allows for the proper selection of equipment and its location in the park.

## ADVANTAGES:

- the best solution for existing surfaces
- the best solution for replacing an old wooden skatepark with a new one
- short execution time

## INTERESTED?

Contact us: [INFO@TECHRAMPS.COM](mailto:INFO@TECHRAMPS.COM)

## PRESENTED PICTURES:

expansion of the existing skatepark in Slupca.



## 1. Preparation of the surface for the equipment.



## 2. Preparation of the form work for the equipment.



## 3. Laying and troweling of concrete for the equipment.



## 4. Striking of the form work - finished project.



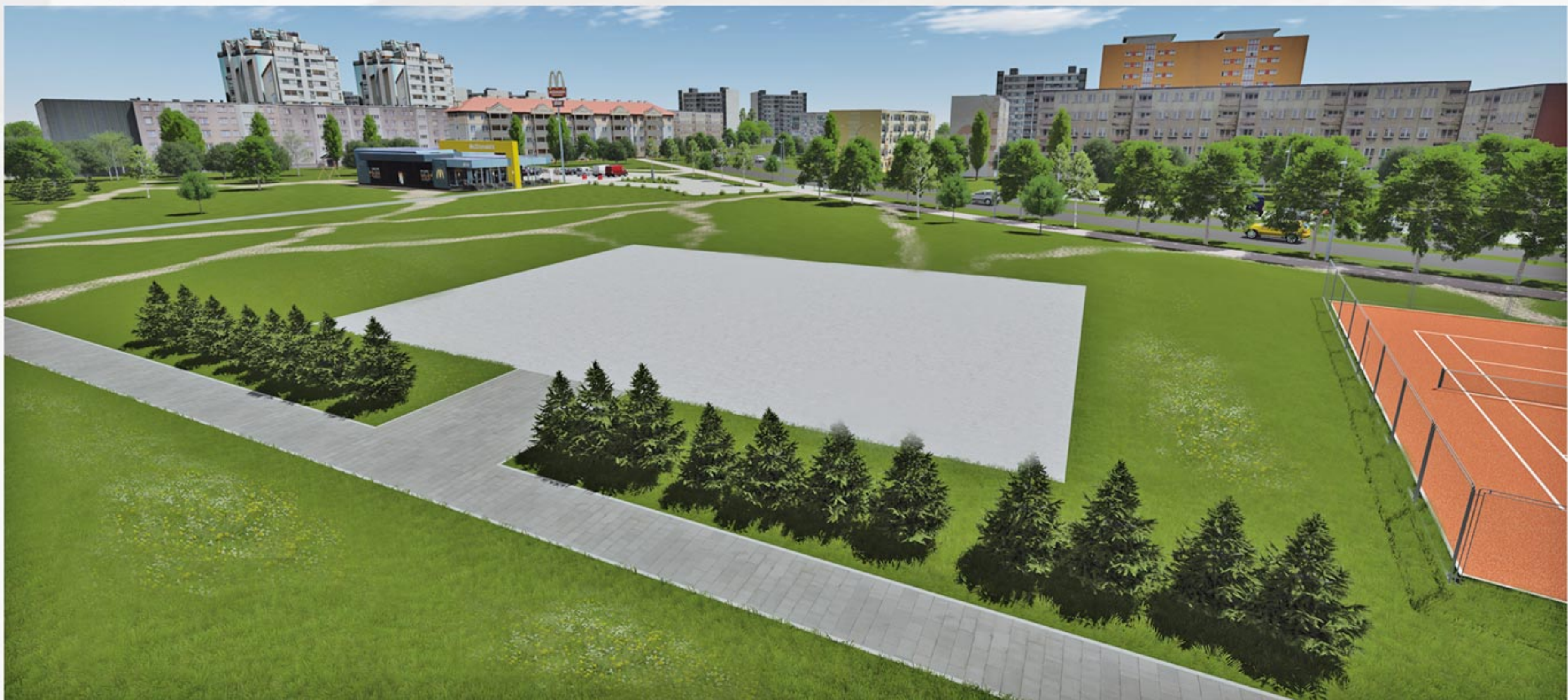


## 02. CONSTRUCTION STAGES

### 1. Removal of the old, damaged obstacles.



### 2. Preparation of the site for the construction of obstacles.



### 3. Construction of obstacles in the LIGHT CONCRETE technology.





## 03. EXAMPLES OF IMPLEMENTED PROJECTS



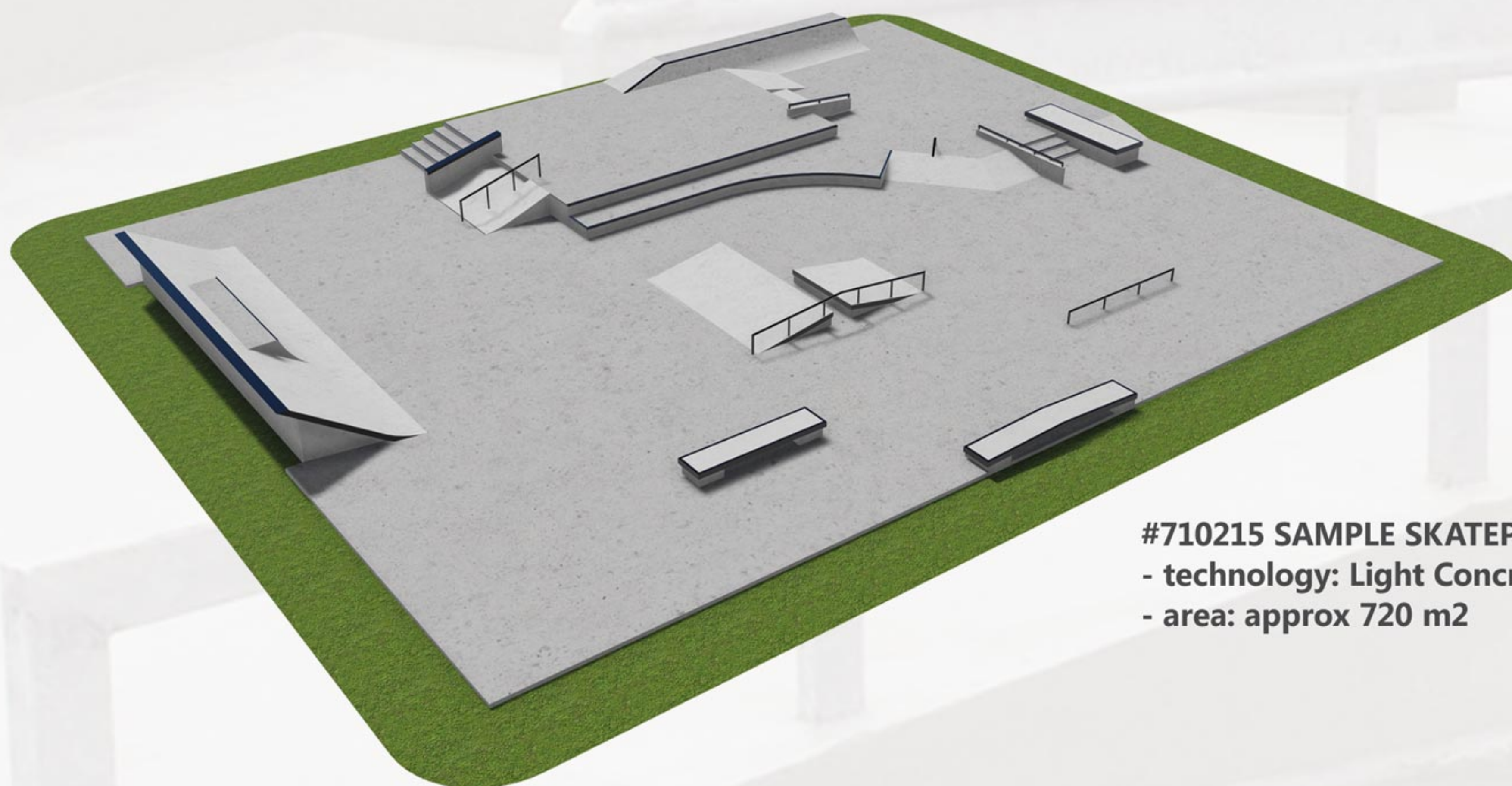
**Skatepark in Milowka.**



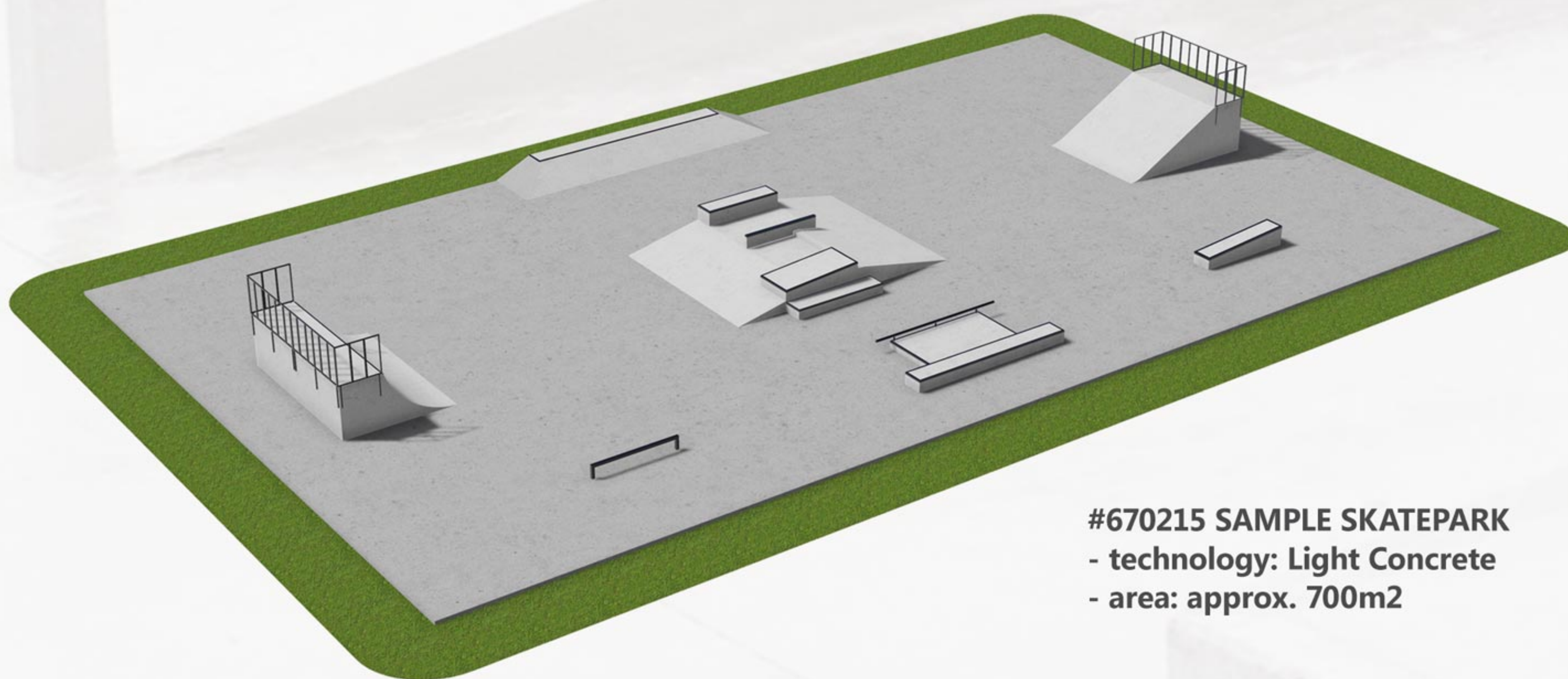
**Skatepark in Stopnica.**



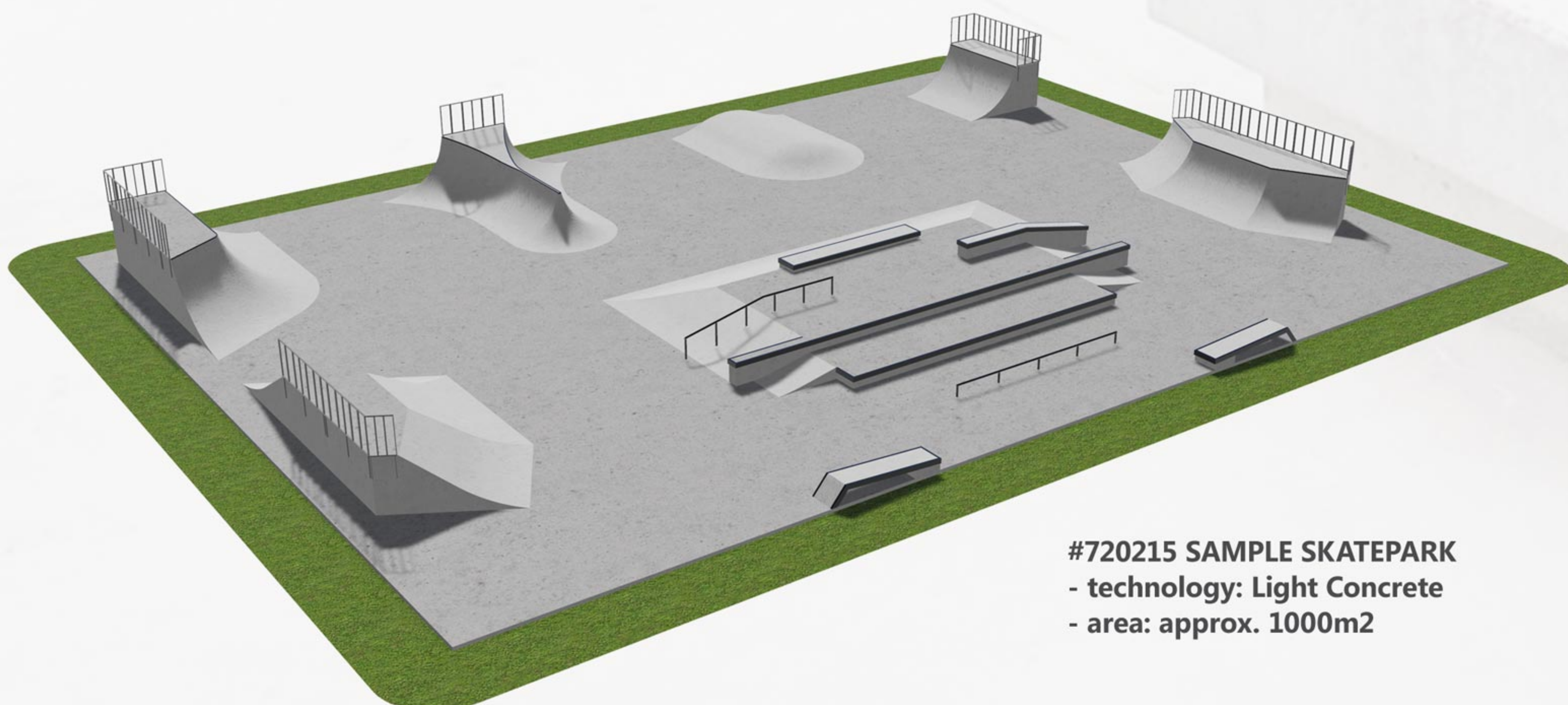
# 04.EXAMPLES OF SKATEPARKS



**#710215 SAMPLE SKATEPARK**  
- technology: Light Concrete  
- area: approx 720 m2



**#670215 SAMPLE SKATEPARK**  
- technology: Light Concrete  
- area: approx. 700m2



**#720215 SAMPLE SKATEPARK**  
- technology: Light Concrete  
- area: approx. 1000m2

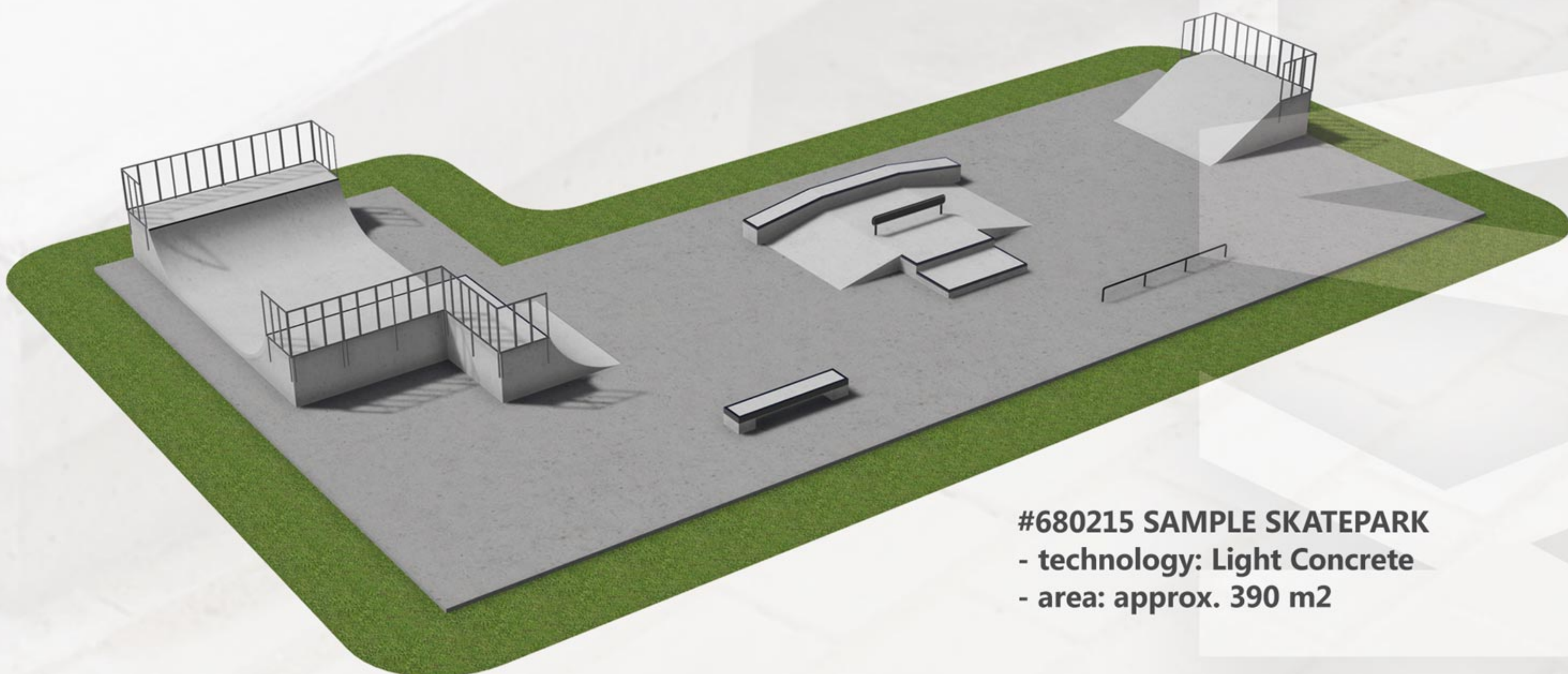




**#660215 SAMPLE SKATEPARK**  
 - technology: Light Concrete  
 - area: approx. 70 m<sup>2</sup>



**#700215 SAMPLE SKATEPARK**  
 - technology: Light Concrete  
 - area: approx. 720 m<sup>2</sup>



**#680215 SAMPLE SKATEPARK**  
 - technology: Light Concrete  
 - area: approx. 390 m<sup>2</sup>





# LIGHT CONCRETE SERIES BY TECHRAMPS

*TECHRAMPS.com*  
Professional Skate Parks

## TECHRAMPS

ORGANKI 2 STR  
31-990 KRAKOW, POLAND  
TEL: +48 12 393-43-07  
FAX: +48 12 393-43-07  
MOBILE: +48 510-200-071

EMAIL: [INFO@TECHRAMPS.COM](mailto:info@techramps.com)  
[WWW.TECHRAMPS.COM](http://WWW.TECHRAMPS.COM)